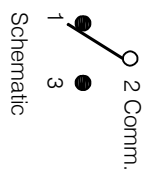
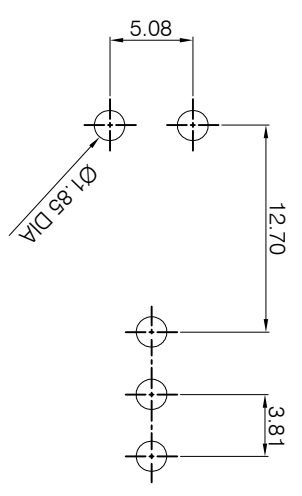
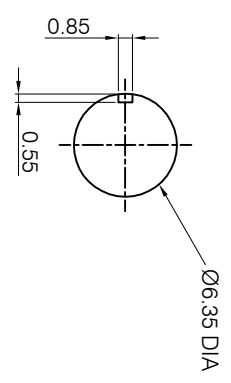


PANEL MOUNTING  
 1/4 IN. BUSHING

P.C. MOUNTING



Switching Position			
ON	OFF	ON	ON
2-3	OPEN	OPEN	2-1

DIMENSIONS IN MILLIMETERS  
 3rd ANGLE PROJECTION  
 SCALE: N.T.S.

DRAWN: PCJ  
 MATERIAL: COMPOSITE / DAP / BRASS / STEEL ALLOY / RPOXY

TOLERANCES  
 0 - 1 RANGE ±0.1  
 1 - 4 RANGE ±0.2  
 4 - 16 RANGE ±0.3  
 DIAMETER HOLES ±0.2  
 ANGLES ± 1/2 DEGREE  
 (UNLESS OTHERWISE STATED)

ISSUE	AMEND	DATE
1	WAS SW-20108	09/11/20

CHECKED: PCS  
 FINISH: AS MOULDED // C/N/ S/Ag Plated

(UNLESS OTHERWISE STATED)



TITLE: SPDT Miniature Toggle Switch,  
 Right Angle Type

DRWG NO: SW-1408