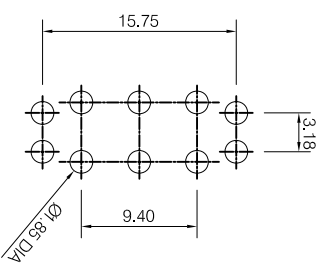
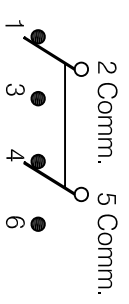
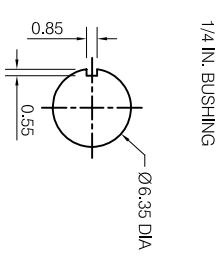


P.C. MOUNTING



PANEL MOUNTING



Schematic

Switching Position	ON	NONE	ON
2-3-5-6	OPEN	2-1, 5-4	

DIMENSIONS IN MILLIMETERS
3rd ANGLE PROJECTION
SCALE: N.T.S.

ISSUE	AMEND	DATE	CHECKED	FINISH:	MATERIAL:	DRAWN
1	1st DRAWN	22/05/11	PCS	AS MOULDED/Cr/Ni/Sn/Ag/Au Plated	COMPOSITE/DAP/BRASS/STEEL	PYQ
2	1st AMEND	20/04/17			ALLOY/EPOXY	
6						

TOLERANCES
NO DECIMAL PLACE ± 0.5
1 DECIMAL PLACE ± 0.2
2 DECIMAL PLACES ± 0.1
DIAMETER HOLES ± 0.1
ANGLES ± 1/2 DEGREE
(UNLESS OTHERWISE STATED)



TITLE: MINIATURE TOGGLE SWITCH - DPDT
STRAIGHT TYPE

DRWG NO: SW-1406

