



X	A	a	H	b
01	1.5	Ø0.4	4.8	4.2
02	1.5	Ø0.5	6.5	4.2
03	3.3	Ø0.35	11.6	4.8
04	3.3	Ø0.4	11.6	4.8
05	3.3	Ø0.5	11.6	4.6

DIMENSIONS IN MILLIMETERS  
3rd ANGLE PROJECTION  
SCALE: N.T.S

Note: Switching Force at 700~800gf.cm

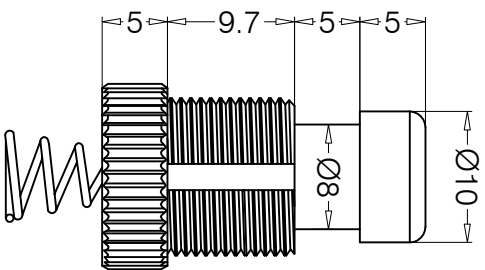
ISSUE	AMEND	DATE
1	1st DRAWN	25/01/24

DRAWN	MATERIAL:
PCJ	BRASS / STEEL
CHECKED: PCS	FINISH: NICKEL PLATED / SPRING TREATMENT

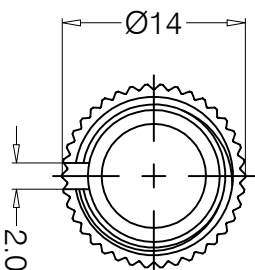
TOLERANCES  
NO DECIMAL PLACE ± 0.5  
1 DECIMAL PLACE ± 0.3  
2 DECIMAL PLACES ± 0.1  
DIAMETER HOLES ± 0.1  
ANGLES ± 1/2 DEGREE  
(UNLESS OTHERWISE STATED)



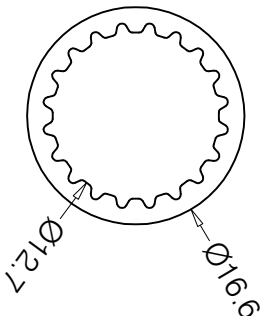
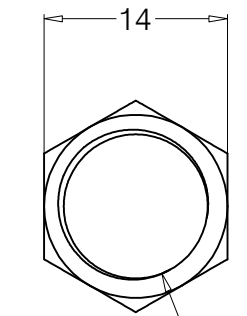
TITLE: PUSH BUTTON KNOB WITH SPRING  
DRWG NO.: SW-1010



NUT 1 PCS T=2.2



WASHER 1 PCS T=0.5



WASHER 1 PCS T=1.4

