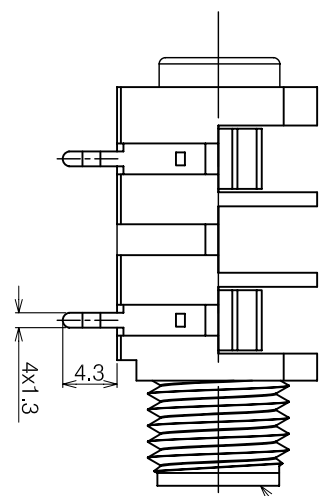
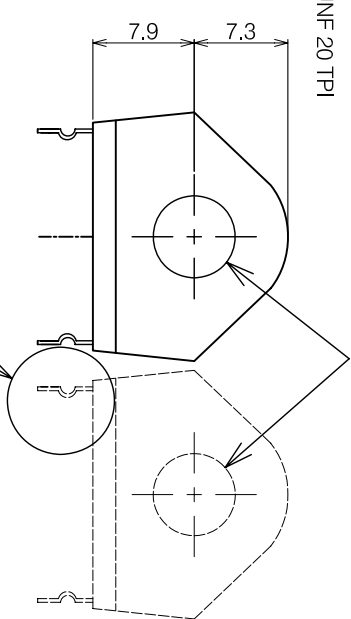


ISOMETRIC VIEW

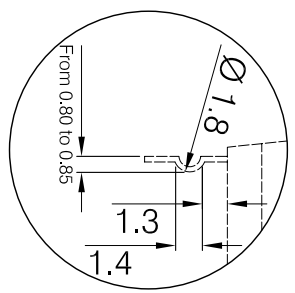


Metal Ring Nose 7/16" UNF-20 TPI



INTERNAL HOLE DIA. Ø 6.4

DETAIL X



SEE DETAIL X

MATERIAL PROPERTIES

Parts	Description	Material	Remark
	Jack Body	Polyamide /Brass	Black /Ni Plated
	Metal Contact	Phosphorus Bronze	Tin Plated
	Metal Nut	7/16" UNF-20TPI	Nickel Plated

DIMENSIONS IN MILLIMETERS  
3rd ANGLE PROJECTION  
SCALE: N.T.S.

SUPPLY METAL NUTS AS LOOSE PARTS  
FOR OTHER PLASTIC NUTS, PLEASE ASK

DRAWN MATERIAL: AS TABLE

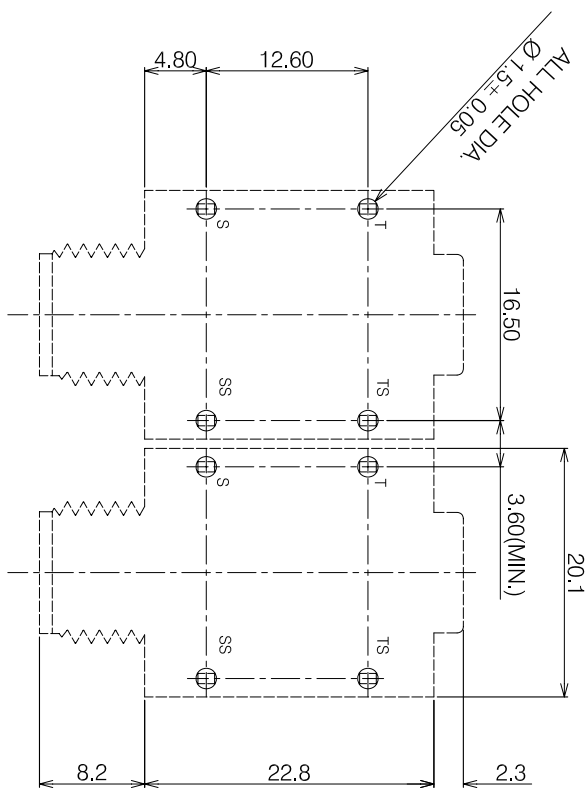
PCJ

CHECKED FINISH: AS MOULDED  
PCS

ISSUE	AMEND	DATE
1	1st DRAWN	16/03/18

TOLERANCES

- NO DECIMAL PLACE ± 1.0
- 1 DECIMAL PLACE ± 0.5
- 2 DECIMAL PLACES ± 0.1
- DIAMETER HOLES ± 0.1
- ANGLES ± 1/2 DEGREE
- (UNLESS OTHERWISE STATED)



PCB LAYOUT



TITLE: TRS 6.35 JACK, NOSE W METAL  
RING INSERT, BNB/PC/KINK  
DRWG NO: TJK-2100R