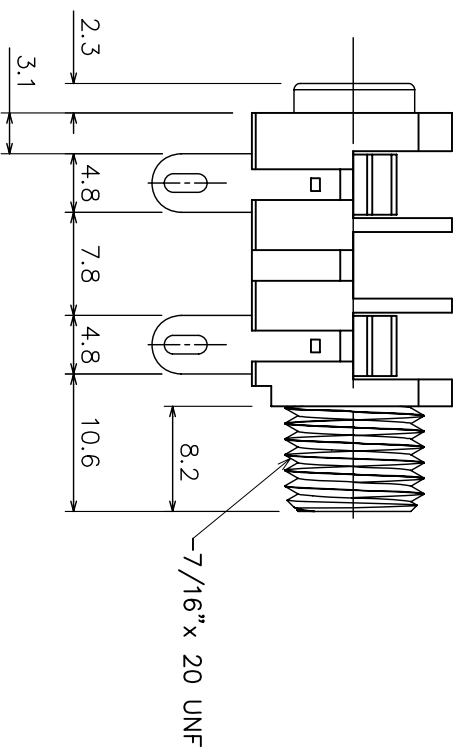
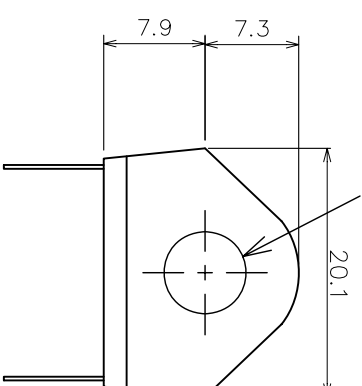
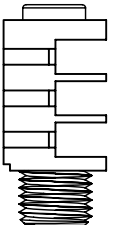



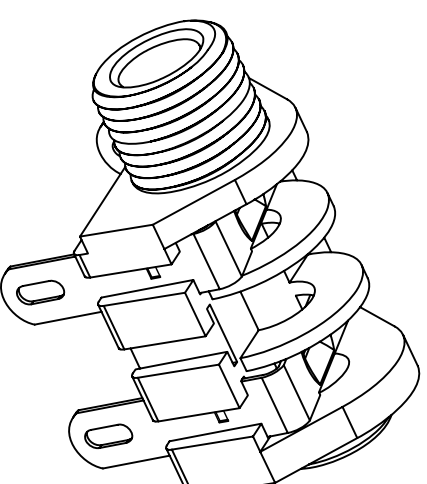


INTERNAL HOLE DIA. Ø6.4



MATERIAL PROPERTIES

Parts	Description	Material	Remark
	Jack Body	Polyamide	White
	FIBRE WASHER (1.6mm Th.)	Vulcanized Fibre	Black
	Plastic Nut	Polyamide	White
	Metal Contact	Nickel Silver	Tin Plated



ISOMETRIC VIEW

DIMENSIONS IN MILLIMETERS
3rd ANGLE PROJECTION

SCALE: N.T.S.

SUPPLY NUTS AND WASHERS AS LOOSE PARTS.

DRAWN		MATERIAL:		TOLERANCES	
PYQ		AS TABLE		NO DECIMAL PLACE ± 1.0 1 DECIMAL PLACE ± 0.5 2 DECIMAL PLACES ± 0.1 DIAMETER HOLES ± 0.1 ANGLES ± 1/2 DEGREE (UNLESS OTHERWISE STATED)	
CHECKED		FINISH: AS MOULDED			
PCS					
ISSUE	AMEND	DATE			
1		12/07/14			



CHK

TITLE: 6.35 PHONE JACK, SOLDER TAG/BNB

DRWG NO.: JT-206W