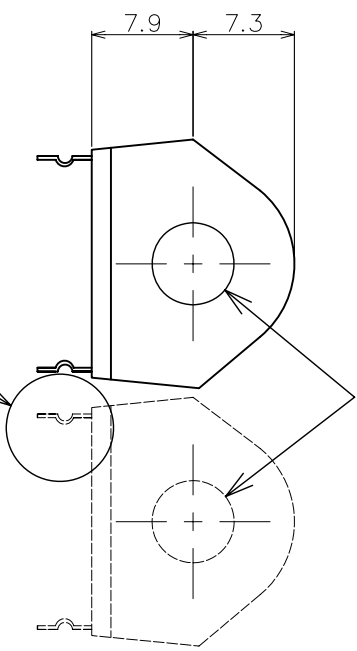
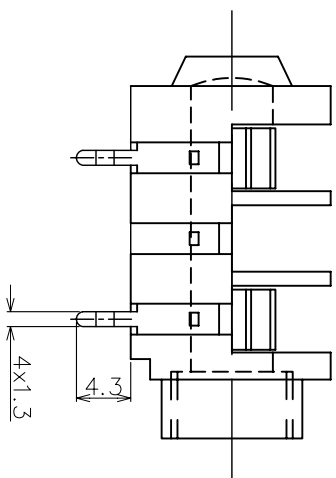
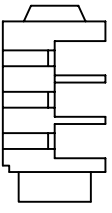

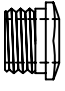
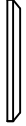



ISOMETRIC VIEW

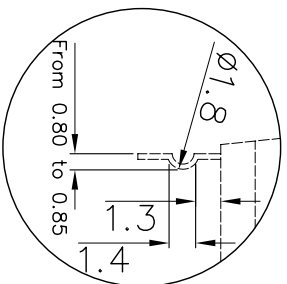


INTERNAL HOLE DIA. Ø6.4

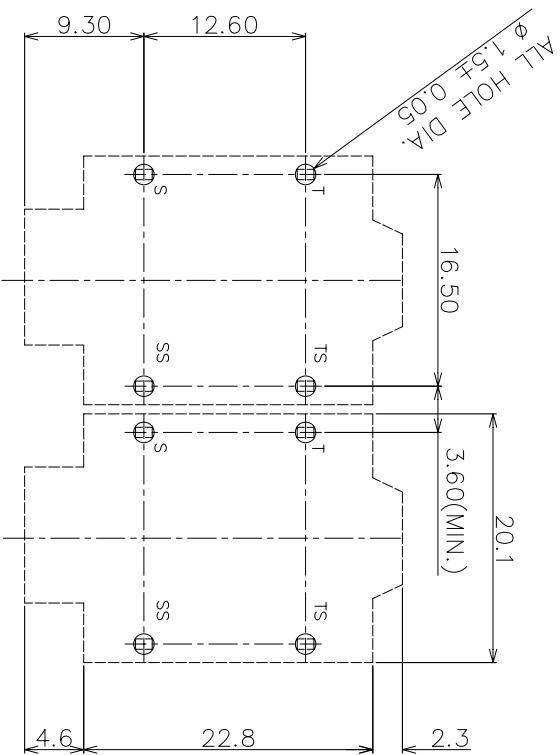
MATERIAL PROPERTIES

Parts	Description	Material	Remark
	Jack Body	Polyamide	Black
	FIBRE WASHER (2 Nos.)	Vulcanized Fibre	Black
	Metal Nut (3/8" x 20(TPI))	Brass	Chrome Plated
	Bezel	PP	Black
	Metal Contact	Nickel Silver	Tin Plated

DETAIL X



SEE DETAIL X



PCB LAYOUT

DIMENSIONS IN MILLIMETERS
3rd ANGLE PROJECTION
SCALE: N.T.S.

SUPPLY NUTS, BEZELS AND WASHERS AS LOOSE PARTS

ISSUE	AMEND	DATE
1	1st DRAWN	10/09/14

DRAWN	MATERIAL:
PHYQ	AS TABLE
CHECKED	FINISH:
PCS	AS MOULDED

TOLERANCES
NO DECIMAL PLACE ± 1.0
1 DECIMAL PLACE ± 0.5
2 DECIMAL PLACES ± 0.1
DIAMETER HOLES ± 0.1
ANGLES ± 1/2 DEGREE
(UNLESS OTHERWISE STATED)



TITLE: 6.35 PHONE JACK, PC-C/KINK/BNB
DRWG NO: JK-4150

