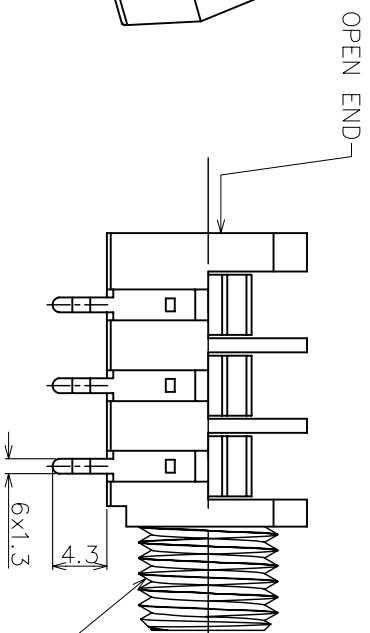
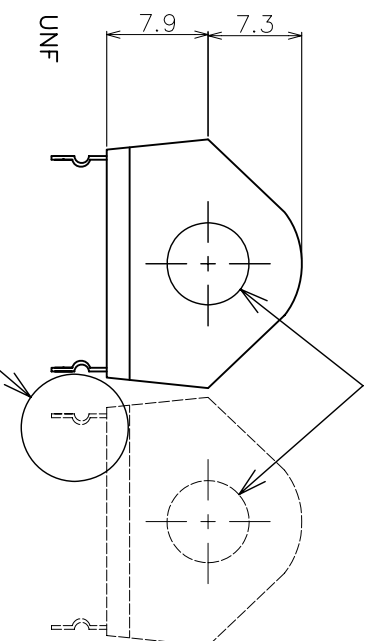


ISOMETRIC VIEW

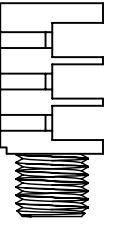





OPEN END

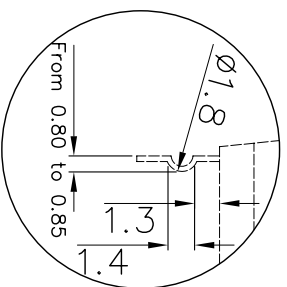


INTERNAL HOLE DIA. Ø6.4

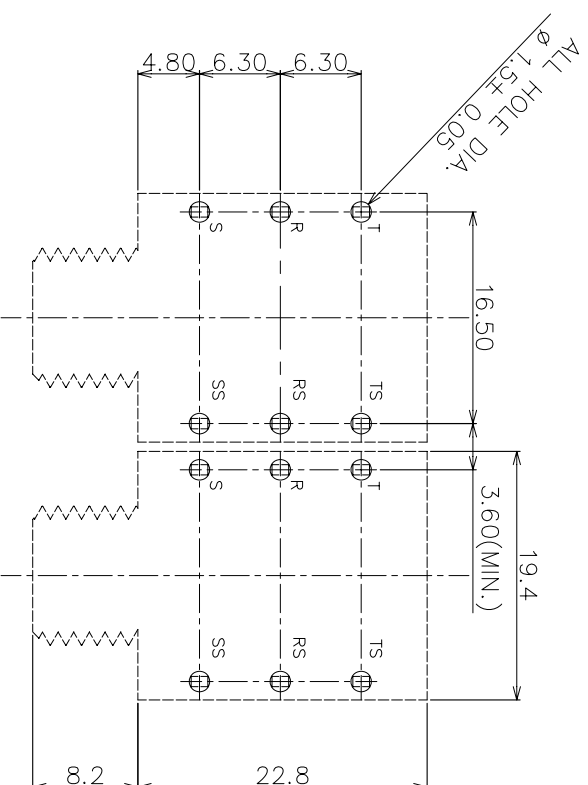
MATERIAL PROPERTIES

Parts	Description	Material	Remark
	Jack Body	Polyamide	Black
	FIBRE WASHER (1.6mm Th.)	Vulcanized Fibre	Black
	Plastic Nut	Polyamide	Black
	Metal Contact	Nickel Silver	Tin Plated

DETAIL X



SEE DETAIL X



PCB LAYOUT

DIMENSIONS IN MILLIMETERS

3rd ANGLE PROJECTION

SCALE: N.T.S.

SUPPLY NUTS AND WASHERS AS LOOSE PARTS

DRAWN PYQ MATERIAL: AS TABLE

1st DRAWN

AMEND

CHECKED FINISH: AS MOULDED

ISSUE

DATE

1

1st DRAWN

AMEND

DATE

1

AMEND

DATE

1

AMEND

DATE

1

AMEND

DATE

1

AMEND

DATE

1

AMEND

DATE

1

AMEND

DATE

1

AMEND

DATE

1

AMEND

DATE

1

AMEND

DATE

1

AMEND

DATE

1

AMEND

DATE

1

AMEND

DATE

1

TOLERANCES
 NO DECIMAL PLACE ± 1.0
 1 DECIMAL PLACE ± 0.5
 2 DECIMAL PLACES ± 0.1
 DIAMETER HOLES ± 0.1
 ANGLES ± 1/2 DEGREE
 (UNLESS OTHERWISE STATED)



TITLE: 6.35 PHONE JACK, PC-C/KINK/BBB
 DRWG NO.: JK-2510

