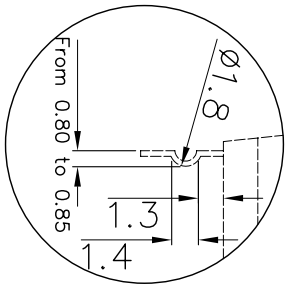
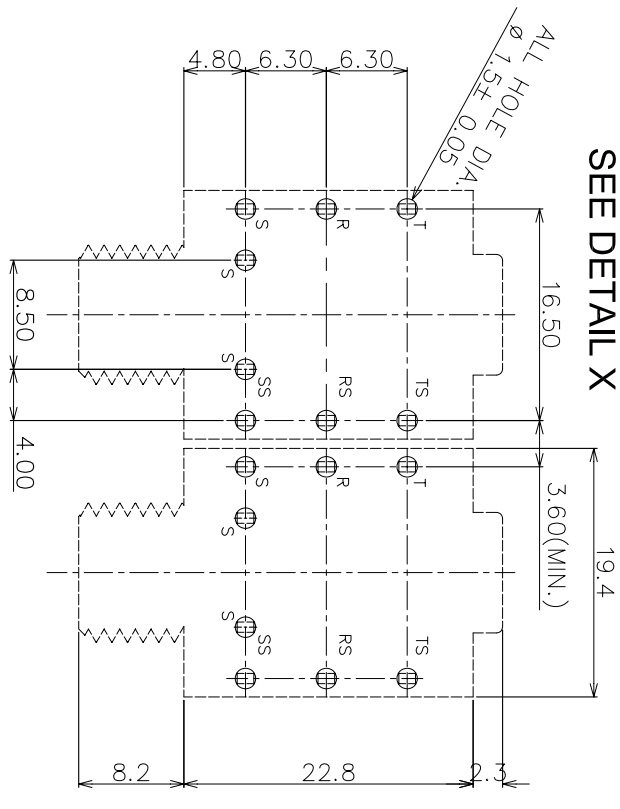


**MATERIAL PROPERTIES**

Parts	Description	Material	Remark
	Jack Body	Polyamide	Black
	FIBRE WASHER (1.6mm Th.)	Vulcanized Fibre	Black
	Plastic Nut	Polyamide	Black
	Metal Contact	Nickel Silver	Tin Plated
	Metal Earth Washer	Steel Alloy	Tin Plated



**SEE DETAIL X**



- 1. SUPPLY NUTS AND FIBRE WASHERS AS LOOSE PARTS.
- 2. STEEL ALLOY EARTH WASHER IS ASSEMBLED ONTO THE PLASTIC BODY.

**E DIMENSIONS IN MILLIMETERS**  
3rd ANGLE PROJECTION  
SCALE: N.T.S.

DRAWN PYQ  
MATERIAL: AS TABLE

**TOLERANCES**  
NO DECIMAL PLACE ± 1.0  
1 DECIMAL PLACE ± 0.5  
2 DECIMAL PLACES ± 0.1  
DIAMETER HOLES ± 0.1  
ANGLES ± 1/2 DEGREE  
(UNLESS OTHERWISE STATED)

CHECKED PCS  
FINISH: AS MOULDED

NO DECIMAL PLACE ± 1.0  
1 DECIMAL PLACE ± 0.5  
2 DECIMAL PLACES ± 0.1  
DIAMETER HOLES ± 0.1  
ANGLES ± 1/2 DEGREE  
(UNLESS OTHERWISE STATED)



**CHK**  
TITLE: 6.35 PHONE JACK, PC-C/KINK/BBB  
DRWG NO: JK-247R

ISSUE	AMEND	DATE
1	1st DRAWN	01/09/14

1 2 3 4 5 6 7 8 9

A