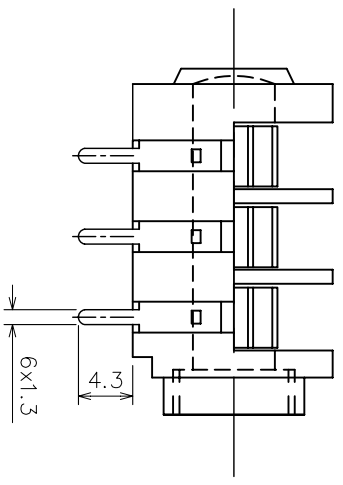
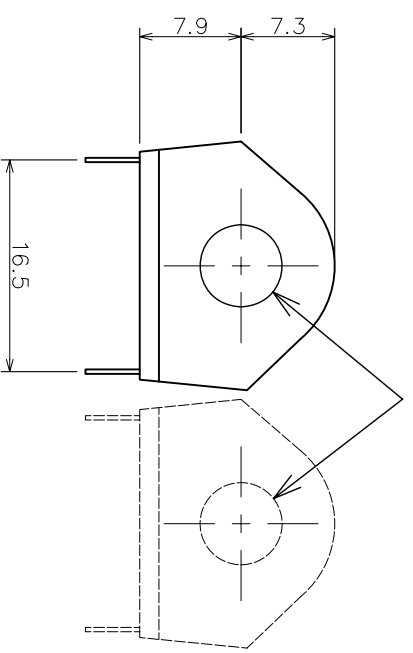


ISOMETRIC VIEW



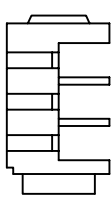
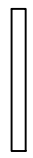

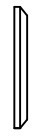

4.3
6x1.3



INTERNAL HOLE DIA. Ø6.4

7.9
7.3
16.5

MATERIAL PROPERTIES

Parts	Description	Material	Remark
	Jack Body	Polyamide	Grey
	FIBRE WASHER (2 Nos.)	Vulcanized Fibre	Black
	Metal Nut (3/8" x 26TP1)	Brass	Chrome Plated
	Bezel	PP	Black
	Metal Contact	Nickel Silver	Tin Plated

DIMENSIONS IN MILLIMETERS
3rd ANGLE PROJECTION
SCALE: N.T.S

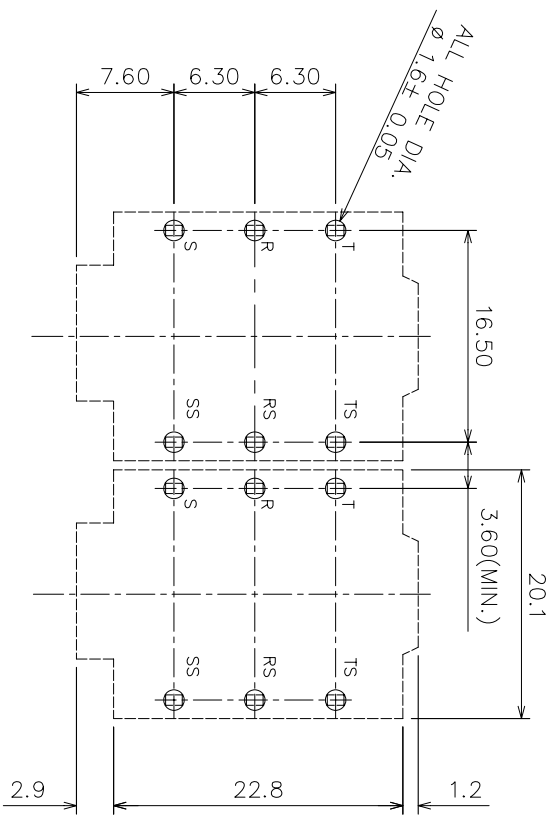
SUPPLY NUTS, BEZELS AND WASHERS AS LOOSE PARTS

ISSUE	AMEND	DATE
1	1st DRAWN	18/11/14

DRAWN	MATERIAL:
PYQ	AS TABLE
CHECKED	FINISH: AS MOULDED
PCS	

TOLERANCES
NO DECIMAL PLACE ± 1.0
1 DECIMAL PLACE ± 0.5
2 DECIMAL PLACES ± 0.1
DIAMETER HOLES ± 0.1
ANGLES ± 1/2 DEGREE
(UNLESS OTHERWISE STATED)

PCB LAYOUT



TITLE: 6.35 PHONE JACK, ADN/PC-C/BBB/
GREY
DRWG NO: JC-426Y

