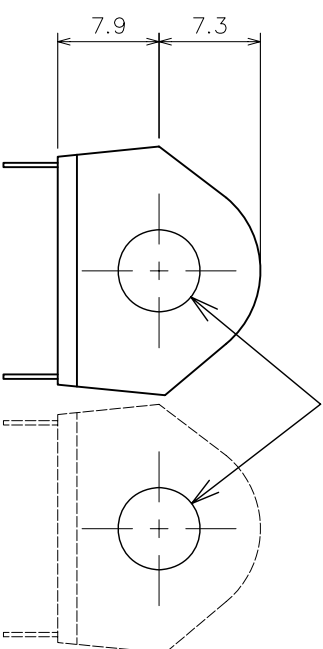
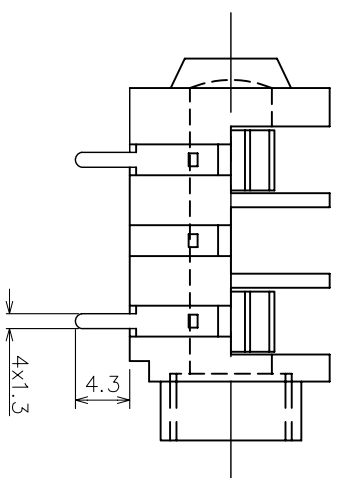
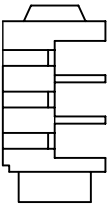






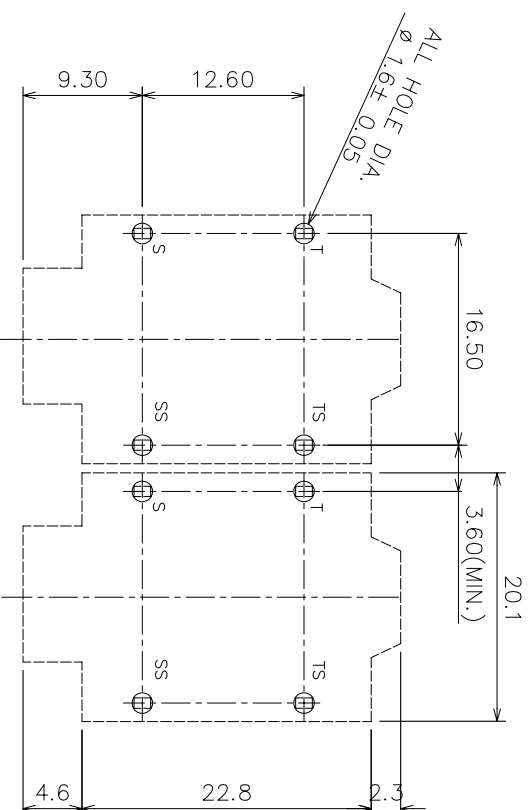
ISOMETRIC VIEW



INTERNAL HOLE DIA. Ø6.4

MATERIAL PROPERTIES

Parts	Description	Material	Remark
	Jack Body	Polyamide	Black
	FIBRE WASHER (2 Nos.)	Vulcanized Fibre	Black
	Metal Nut (3/8" x 20TPi)	Brass	Chrome Plated
	Bezel	PP	Black
	Metal Contact	Nickel Silver	Tin Plated



PCB LAYOUT

DIMENSIONS IN MILLIMETERS
3rd ANGLE PROJECTION

SCALE: N.T.S

SUPPLY NUTS, BEZELS AND WASHERS AS LOOSE PARTS

ISSUE	AMEND	DATE	DRAWN	MATERIAL:	TOLERANCES
1	1st DRAWN	08/06/14	PCJ	AS TABLE	NO DECIMAL PLACE ± 1.0 1 DECIMAL PLACE ± 0.5 2 DECIMAL PLACES ± 0.1 DIAMETER HOLES ± 0.1 ANGLES ± 1/2 DEGREE (UNLESS OTHERWISE STATED)
			CHECKED	FINISH: AS MOULDED	
			PCS		



CHK

TITLE: 6.35 PHONE JACK, PC-C/BNB
DRWG NO: JC-4100

