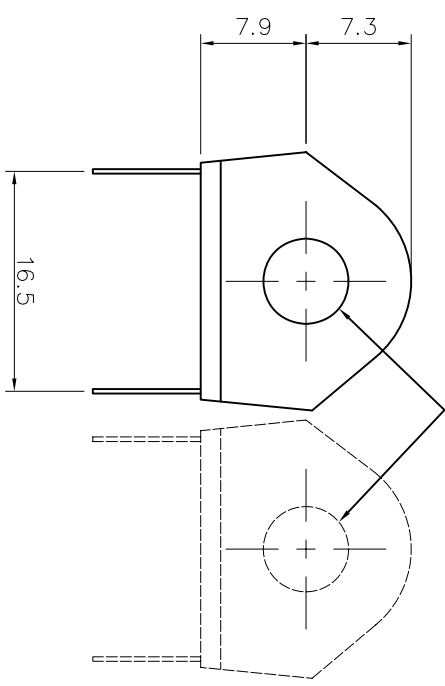
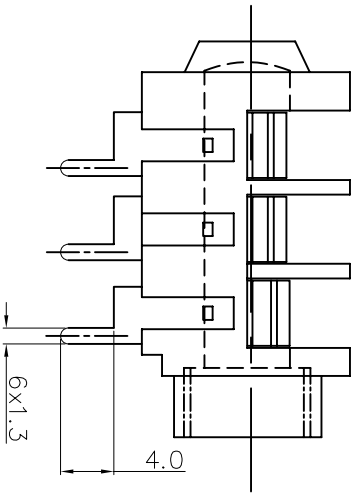


ISOMETRIC VIEW



INTERNAL HOLE DIA. Ø6.4

MATERIAL PROPERTIES

Parts	Description	Material	Remark
	Jack Body	Polyamide	Black
	Fibre Washer (2 Nos.)	Vulcanized Fibre	Black
	Metal Nut (3/8" x 20TPi)	Brass	Chrome Plated
	Bezel	PP	Black
	Metal Contact	Nickel Silver	Tin Plated

DIMENSIONS IN MILLIMETERS

3rd ANGLE PROJECTION

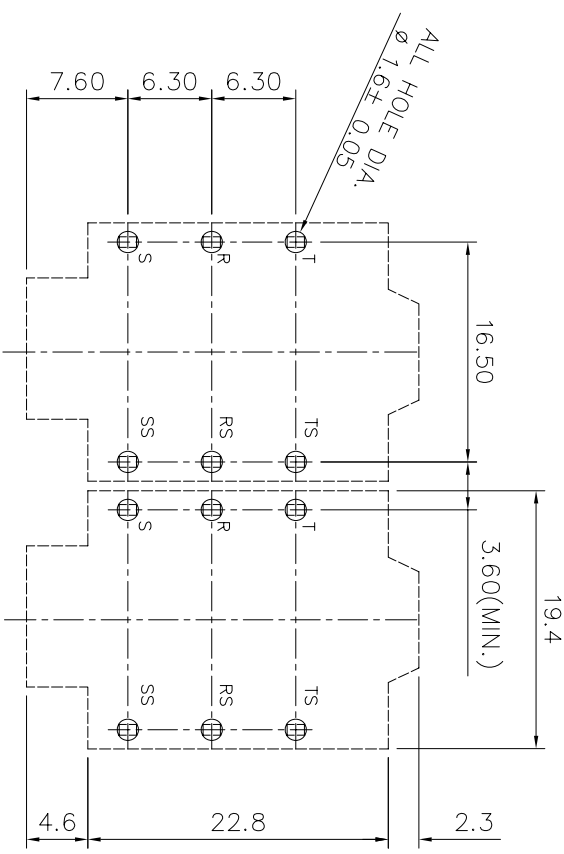
SCALE: N.T.S

NOTE: NUT AND WASHER TO BE SUPPLIED AS LOOSE PARTS

DRAWN		MATERIAL: NYLON / NICKEL SILVER	
PYQ			
CHECKED		FINISH: AS MOULDED	
PCS			
ISSUE	AMEND	DATE	
1		18/11/14	

TOLERANCES  
 NO DECIMAL PLACE ±  
 1 DECIMAL PLACE ± 0.2  
 2 DECIMAL PLACES ±  
 DIMETER HOLES ± 0.2  
 ANGLES ± 1/2 DEGREE  
 (UNLESS OTHERWISE STATED)

PCB LAYOUT



TITLE: 6.4mm US4 PHONE JACK (PC-A/BBB)

DRWG NO: JA-4260

