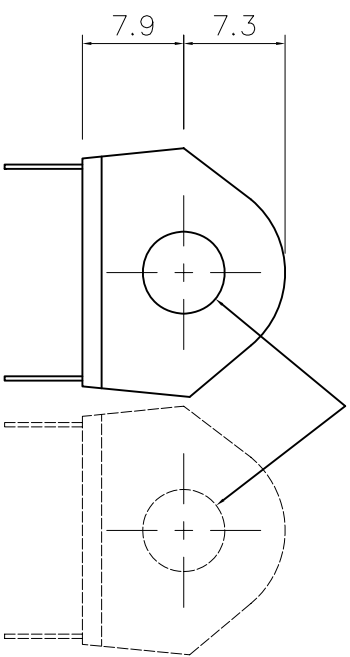
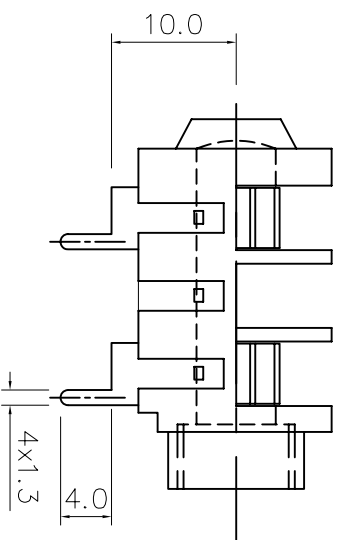


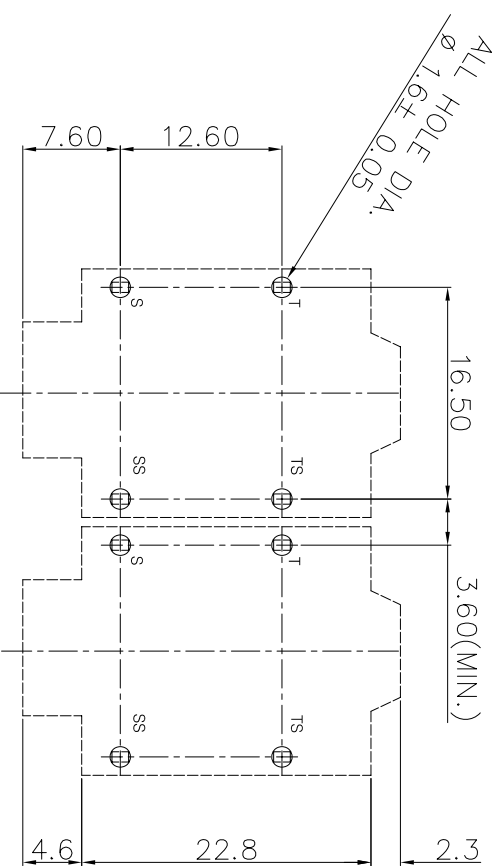
ISOMETRIC VIEW



INTERNAL HOLE DIA. Ø6.4

MATERIAL PROPERTIES

Parts	Description	Material	Remark
	Jack Body	Polyamide	Black
	Fibre Washer (2 Nos.)	Vulcanized Fibre	Black
	Metal Nut (3/8" x 20TP)	Brass	Black
	Bezel	PP	Black
	Metal Contact	Nickel Silver	Tin Plated



PCB LAYOUT

DIMENSIONS IN MILLIMETERS  
3rd ANGLE PROJECTION  
SCALE: N.T.S

SUPPLY NUTS, BEZELS AND WASHERS AS LOOSE PARTS

ISSUE	AMEND	DATE
1	1st DRAWN	17/11/16

DRAWN	MATERIAL:
PYQ	SEE TABLE
CHECKED	FINISH: AS MOULDED
PCS	

TOLERANCES  
NO DECIMAL PLACE ± 1.0  
1 DECIMAL PLACE ± 0.5  
2 DECIMAL PLACES ± 0.1  
DIAMETER HOLES ± 0.1  
ANGLES ± 1/12 DEGREE  
(UNLESS OTHERWISE STATED)



TITLE: 6.35 PHONE JACK, PC-A/BNB  
DRWG NO: JA-4080

