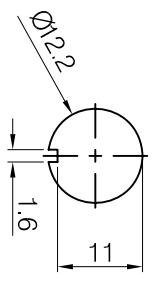
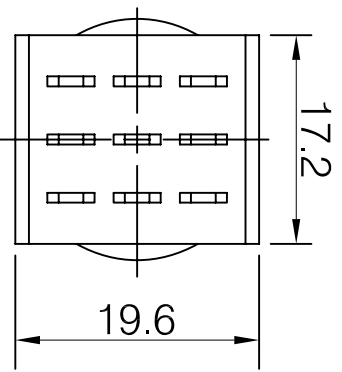



SPECIFICATION

1. Rating : AC 125V 4A 250V 2A.
2. Contact R. : 20M Ω Max.
3. Insulation R. : DC 500V 100M Ω Min.
4. Dielectric Strength : AC 1500V 1 minute
5. Electrical Life : 20,000 make-and-break cycles at full load.
6. Operating Temperature: -20° C ~ 65° C



Panel Thickness : 3.0mm Max.

DIMENSIONS IN MILLIMETERS
3rd ANGLE PROJECTION
SCALE: N.T.S.

DRAWN PCJ		MATERIAL: COMPOSITE		TOLERANCES NO DECIMAL PLACE ± 0.2 1 DECIMAL PLACE ± 0.2 2 DECIMAL PLACES ± 0.2 DIAMETER HOLES ± 0.2 ANGLES $\pm 1/2$ DEGREE (UNLESS OTHERWISE STATED)	
CHECKED PCS		FINISH: AS MOULDED		 CHK TITLE: 3 POLE FOOTSWITCH 3 PDT DRWG NO: FC71078	
ISSUE 1	AMEND	DATE 26/03/09			