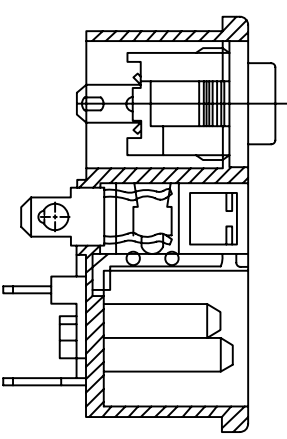


Indicator Type:



SPECIFICATIONS

- 1. RATING : 10A 250VAC
- 2. WITHSTAND VOLTAGE : AC 2000V 1Min
- 3. INSULATION RESISTANCE : MORE THAN 100MΩ (at DC 500V)
- 4. OPERATING TEMPERATURE : -25° C TO +85° C (MAX)
- 5. SAFETY



DIMENSIONS IN MILLIMETERS
3rd ANGLE PROJECTION
SCALE: N.T.S.

DRAWN PYQ		MATERIAL: PA666/Ph BRONZE	
CHECKED PCS		FINISH: AS MOULDED/TIN PLATED	
ISSUE	AMEND	DATE	
1		15/01/16	

TOLERANCES
 NO DECIMAL PLACE ± 0.5
 1 DECIMAL PLACE ± 0.2
 2 DECIMAL PLACES ± 0.1
 DIAMETER HOLES ± 0.1
 ANGLES ± 1/2 DEGREE
 (UNLESS OTHERWISE STATED)



TITLE: IEC POWER INPUT RECEPTACLE, SP,
SWITCHED W FUSE, SNAP-IN PANEL, 10A/250VAC

DRWG NO: AC-1008A

